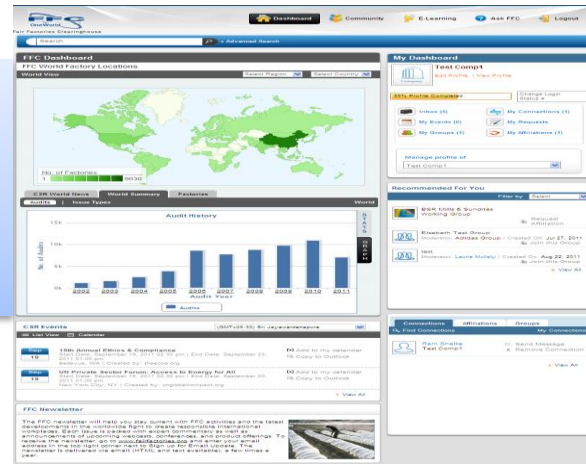


## ffconeworld.com | A global collaborative membership community portal with networking & e-learning features.

**Summary:** Collabor built a secure online global collaborative membership community for consumer company brands and their supply chain intermediaries to share ethical business transactions, manage compliance performance & training to improve workplaces.



### About [ffconeworld.com](http://ffconeworld.com)

**Industry: Retail / Manufacturing**

- Global membership based compliance management & shared audit management portal.
- Secure & private membership community for professional networking, collaborative monitoring, e-learning – course delivery, assessment & certification.

### FFC Members:

**adidas**  
GROUP



**BURBERRY**  
ESTABLISHED 1856

**LEVI STRAUSS & CO.**



**Timberland**

**Primary Business Driver:** 1) to build a community & networking portal with focus on collaboration & sharing around Fairfactories' audits 2) to build an e-learning platform for on-going training, education & promoting manufacturing best practices and 3). to provide a solid foundation to further support Fairfactories' charter of enabling ethical business practices and improved workplaces around the world.

## Solution – Work™2.0 Platform

### Work 2.0 Tools

- User Management
- Menu Management
- Content Management
- Media Management
- Blogs Management
- Rules Engine
- Workflow Manager

### Technology Configuration

- Linux, Apache SLOR, MySQL.
- jQUERY, web services.

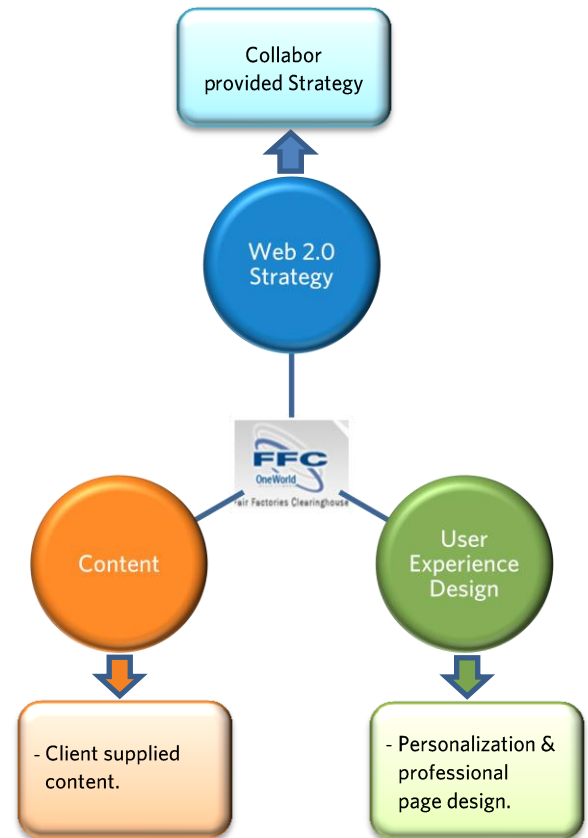
### Work 2.0 Modules

- Registration – a multi-step authenticated login process.
- User Profiles.
- Text Contents: Blogs, groups, discussion forums, Q&A, Polls
- Multimedia content – text, videos, audio
- Groups: User allowed to create their own groups by sending invites.
- Search
- eLearning module
- Calendar
- Resources & presentation – Admin upload audios, videos, docs which are accessible to users as per their membership.
- Monetization.

## Customizations & Integration

- Membership based view with customized dashboard.
- Multiple profile management – factory & individual profiles can be managed.
- E-learning – courses (multi-format), users, fees, accreditation & certification management panel.
- CMS for managing the static content, categories & site tips.
- Calendar – individual & system wide.
- Search – Powerful text based simple & advanced Lucene search.
- Payment: Integration with PayPal for payment processing of e-learning courses where applicable.
- Integration with Google maps.
- Integration with third party audit platform built on Microsoft technologies.
- Email alerts.

## Service overview



## Business results

- FFC OneWorld – the cloud deployed collaboration portal is now open to all members, factories, auditors and other supplychain intermediaries across the world.
- FFC OneWorld brings 15 user categories under one umbrella with distinct rights and privileges for each category.